

SPUL'U'KWUKS NEWS

We acknowledge and thank the First Peoples of the **hən̓ q̓ əm̓n̓ əm̓** (hun-ki-meen-um) language group on whose traditional and unceded territories we teach, learn and live.

Moving/Changing Schools

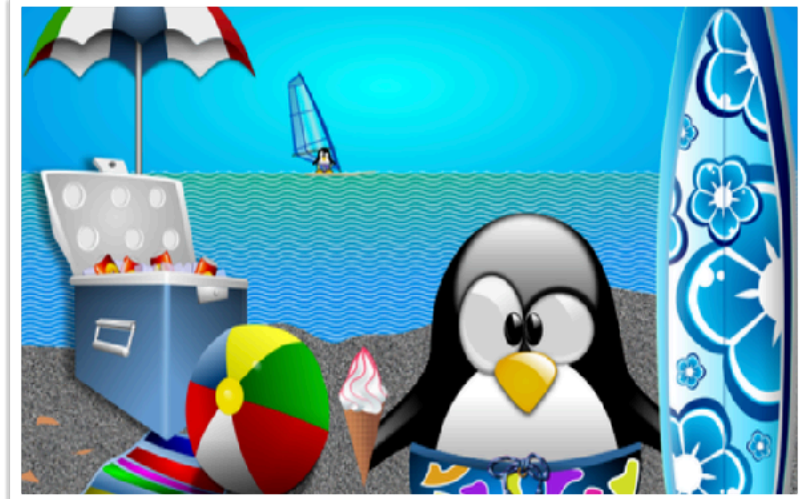
If you move out of Richmond or change schools over the summer, please email us at spulukwuks@sd38.bc.ca to let us know. The office will reopen on August 25th, and it will be helpful for us to have that information when we come back.

Read Your Email!

Important information is sent home weekly through newsletters (also posted on our website) and by email. Please make sure you check your email regularly during the school year so you don't miss out!

School Calendar for 2025-2026

We have attached the school calendar (originally sent home in May) to this newsletter. Please keep it in an accessible location to reference holidays, Professional Days, and school and office hours.



Happy Summer!

As we close the chapter on another wonderful school year, we want to extend our heartfelt thanks for your continued support, encouragement, and partnership. Together, we've created a nurturing and inspiring environment where our students have grown, learned, and thrived.

Summer is a time for rest, play, and making memories. Whether you're traveling, exploring nature, diving into a good book, or simply enjoying time together, we hope this season brings your family joy and relaxation.

We encourage our students to stay curious, keep reading, and enjoy the simple wonders of summer. We look forward to welcoming everyone back in September, refreshed and ready for another exciting year of learning and discovery!



Attendance Reminder

Students are expected to return to school on Tuesday, September 2nd. If an unforeseen circumstance arises over the summer (not a vacation extension) and your child will not be present on September 2nd, please complete the **Notice of Late Return** found on our website. Any student who does not attend on or before September 10th will be withdrawn from our register.



First Day Plans:

Tuesday, September 2, 2025

All students are assigned attendance times:

Gr. 1 – 7 students attend 8:45 – 9:45

New students, please come to the office for a temporary room assignment.

All new Kindergarten students attend 1:00 – 2:00. You will receive an email tomorrow with more information.

All students enter and exit the school through outside classroom doors (not front or side doors).

First Week Plans:

Wednesday, September 3 to Friday, September 5

Gr. 1 – 7 students attend 8:45 – 2:45 every day

Please send a snack, lunch, and water bottle with your child in the morning.

Students will remain in last year's class until attendance is finalized. New students will stay in their temporary room assignment.

We hope to move to our new classes some time on Friday.

Kindergarten students attend according to the Gradual Entry (A/B) schedule we will email you tomorrow. The schedule tells you what days to send a snack and lunch. Please send a water bottle every day.



Dates for Your Calendar

- July 23 Last day for students
- July 24: Last day for staff
- Aug. 25: Office reopens
- Sept. 1: Labour Day (School Closed)
- Sept. 2: First day for students (see attendance hours on previous page)

Student Lunches:

It will take time for the hot lunch programs (PAC and Libby's Kitchen) to get up and running, so please send a lunch with your child until ordering information is sent home. *We do not have agreements with any other food delivery services, so please do not make arrangements with other groups to be at the school during the school day.*

All students should also bring a snack every day to eat for recess. We encourage healthy lunches/snacks and water as the drink of choice. There are bottle filling stations in each wing of the school.

We are unable to heat lunches for students, so you may pack a hot lunch in a thermos or deliver it to the outside classroom door and leave it on the ledge outside by 11:50am.

For new Kindergarten students and new K/1 classes, there is a cart inside the front door of the school where you can drop off your child's lunch. It will be delivered to the classroom for them. K and K/1 students begin eating earlier, so check with your child's teacher for lunch drop-off time.

If you wish to take your child home/out for lunch, please tell your child's classroom teacher. Otherwise, students do not leave the school grounds during the school day.

