

SPUL'U'KWUKS NEWS

We acknowledge and thank the First Peoples of the **hən̓ q̓ əm̓n̓ əm̓** (hun-ki-meen-um) language group on whose traditional and unceded territories we teach, learn and live.

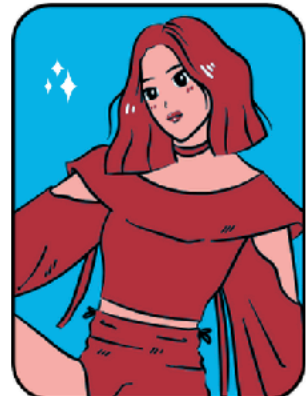
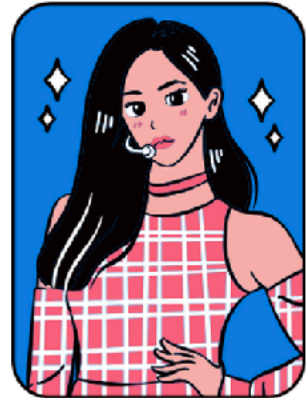


Dates for Your Calendar

- Jan. 12: **K-Pop Parent Performance in the afternoon begin at 1:15**
- Jan. 16: Welcome Back Assembly for students
- Jan. 21: PAC Meeting 6:30pm in person in the Library and virtually on Teams
- Jan. 26: Professional Day (no school for students)
- Feb. 13 Professional Day (no school for students)
- Feb. 16: Family Day (school closed)
- **Feb. 24: Early Dismissal @1:45 for Conferences**
- Feb. 25: Pink Shirt Day
- **Feb. 26: Early Dismissal @1:45 for Conferences**

You are invited to watch our classes perform their K-Pop dances on Monday!

K-POP



PARENT PRESENTATION!

MONDAY, JANUARY 12

PARENT ARRIVAL AT 1:00 (NO EARLY BIRDS!)

PERFORMANCE BEGINS AT 1:15

Families are invited to attend a musical performance, organized by the Hui Family, to raise money for the school. Half of the donations collected will be to support Spul'u'kwuks' Band and Music programs and the other half will go towards Outdoor Learning.

Scan the QR code below to get your free admission tickets! Donations are kindly requested at the door. For support in Mandarin to request tickets, call 778-242-7878.



回老师钢琴学校
HUI PIANO SCHOOL

For the Love of Spul'u'kwuks

Photos by Michael Sun

Andy Jin
performer

Angel Li
performer

Angela Jin
performer

Bowen Sun
performer

Ginger Li
performer

Jayden Li
performer

Jessie Sun
performer

Mr. Hui
Teacher

Michelle Hui
performer

Theodore Hui
performer

Date&Time: 10:30am, January 31st, 2026
Address: 12180 Riverside Way, Richmond

Sponsor

Krystal Ma
Personal Real Estate Corporation
778.885.0556
CHAIRMAN'S AWARD

STEINWAY & SONS

TOM LEE
Music

DALLAS KO
INTERIORS

reserve seat

Text: 778-242-7878

Inside and Outside Shoes



It is snow goose season, as well as winter, and the grounds outside are especially mucky this time of year. We do our best to keep the school floors and carpets clean, and need your help! We ask that all families send a second pair of footwear for each child, often called "inside shoes". These shoes do not have to be new...you can send a pair of shoes that you already have at home.



When students come in from being outside, we will ask them to change into their inside shoes. This is a common practice for primary students and your child's class may already be doing this. We are asking for students in Gr. K-7 to adopt this practice.

We use all spaces in our classrooms to sit and work and keeping them clean will help to make learning a more comfortable experience. Thank you!

Important! School Messenger

Be on the look-out! In February, parents will receive an automated text message to the mobile numbers you provided to us asking you to opt-in to receive text notifications from School Messenger. The purpose of this request is to allow time-sensitive messages to be passed on to you, especially for emergencies (one school recently had a flood overnight and the school needed to be closed the next day).

School Messenger will **not** be used as a regular communication method; we will continue to send emails and provide a newsletter weekly. School Messenger ensures the safety and confidentiality of your information. Your data will never be shared or sold to any third party.

We ask that you accept the message when it arrives. It is a "**one-time**" action and you only need to respond with a "Y" for "Yes".



VOLUNTEER INTERPRETERS NEEDED



The Richmond School District is seeking individuals who are fluent in English and other languages to join our Volunteer Interpreter Team.

Help strengthen communication between schools and families by providing language support during parent teacher conferences. Your involvement helps ensure every family feels welcomed and informed.

Training is provided.
All languages welcome.

To express your interest, please email your CV before January 16, 2026 to:
culturalinterpreters@sd38.bc.ca

Inclement Weather: School Closure Notifications

The Richmond School District is committed to ensuring the safety of students and staff during severe weather conditions.

The district will assess weather conditions early in the morning and will aim to determine any school closures or delayed openings by 6:30 a.m. The decision will be based on factors such as road conditions, snowfall accumulation, and overall safety risks.

Updates will be delivered using social media and school and district websites:

- Facebook: <https://www.facebook.com/RichmondSD38>
- Twitter: <https://twitter.com/RichmondSD38>

Please note that only school closures or delayed openings will be announced. If schools are open, no announcement will typically be made. However, in extreme circumstances or if additional clarity is needed, the district will confirm that schools are open.

Student Safety and Transportation

Parents/guardians are responsible for ensuring their child's safe travel to and from school. If schools are open, and you wish to keep your child home due to weather conditions, you may do so. Please let your school know of this decision.

School buses may experience delays or route adjustments due to road conditions. If bus service is affected, updates will be provided by 6:30 a.m. on the district website and social media.

During the School Day

If snowfall begins while school is in session, schools will remain OPEN until the regular dismissal time. However, in extreme circumstances, early dismissal may be necessary. If this occurs, parents will be notified by their school.

This message has been shared by the Richmond School District. If you have any questions, please contact questions@sd38.bc.ca.

